

Mirage 1.6.x – 2.x.x: Installation of Tetenal Spectra Jet media packages for Epson printers

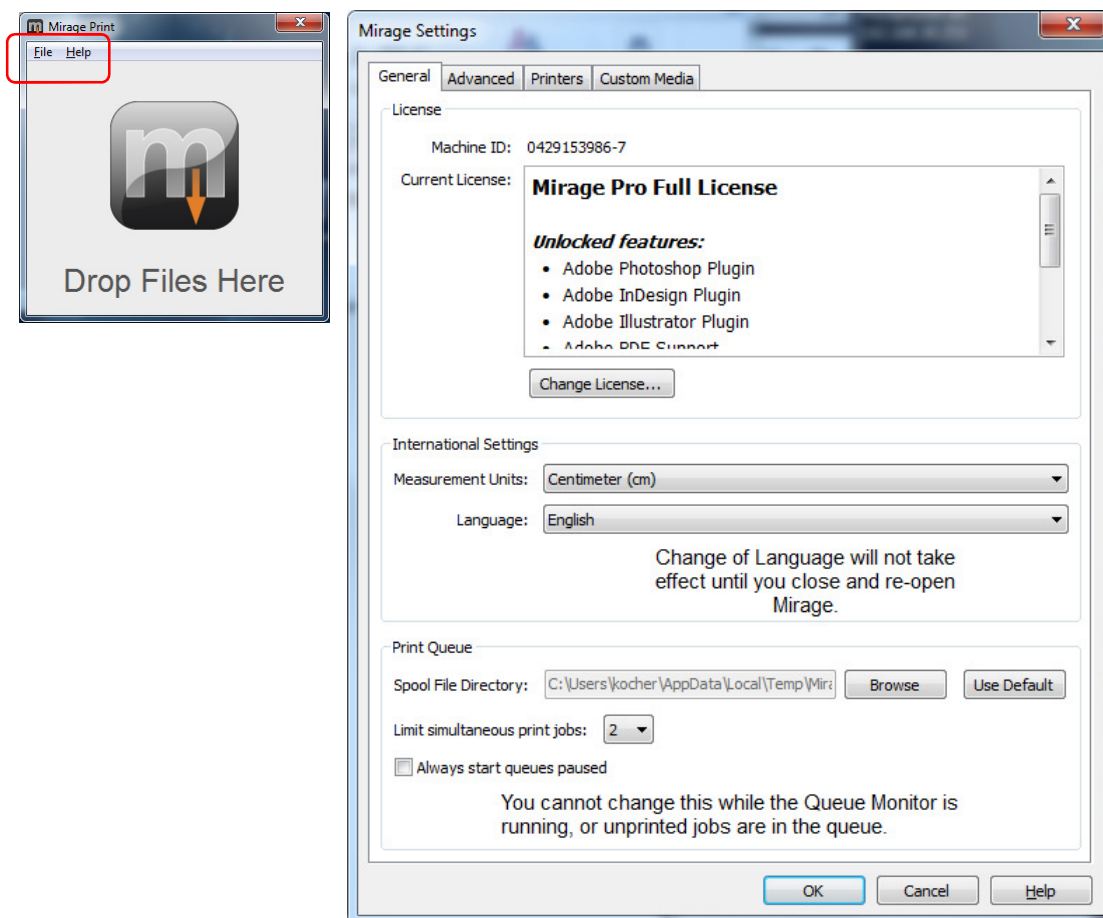
Tetenal Spectra Jet media packages

Please find here the Mirage media packages containing all Tetenal Spectra Jet media for supported Epson Stylus Pro printers. Clicking the link on our website will start the download of the Mirage media package containing the media you need support for.

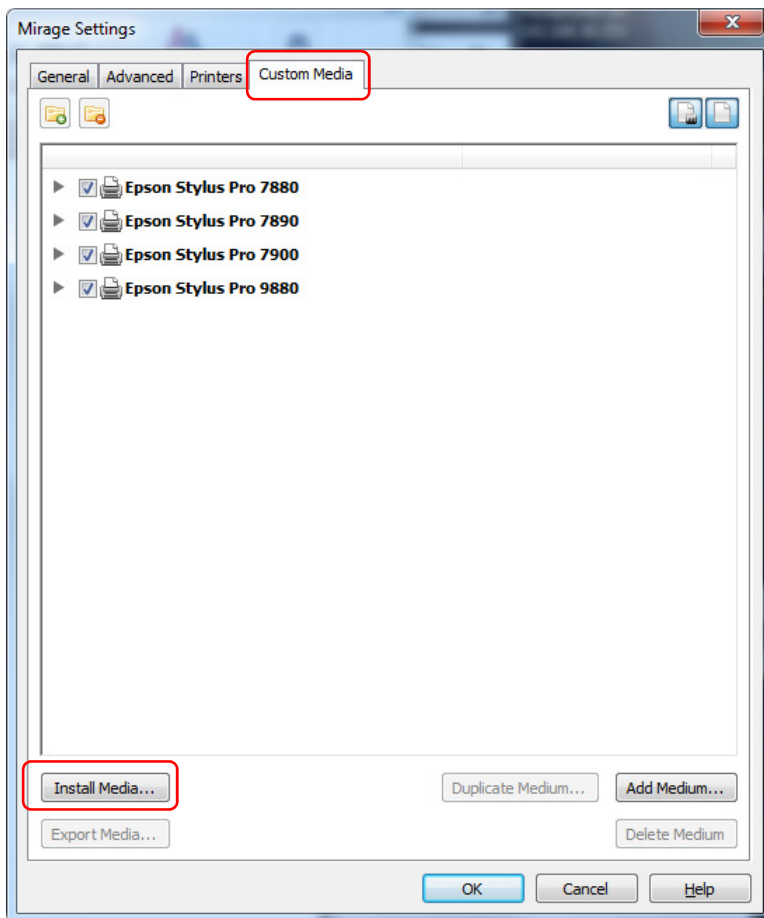
Link: http://www.tetenal.com/icc/Tetenal_spectra_jet_Mirage_Media_Package/

Installation of Mirage media packages:

1) Start Mirage and open the Settings... menu with „File“ > „Settings“.

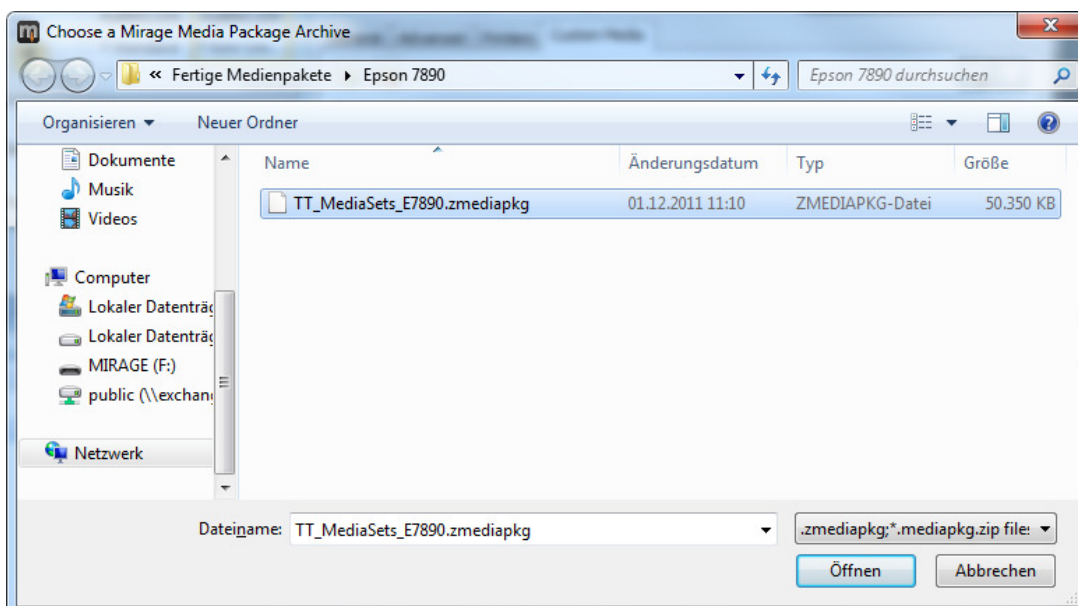


2) Select the tab: "Custom Media"



3) Select bottom left the „Install Media...“ button.

4) In the opening Explorer window (Windows) / Finder Menu (Mac) choose the appropriate Mirage media package "*.zmediapkg" file (do not unzip the Mirage media package).



Important note for Apple Macintosh / Safari Users: Downloading Mirage media packages using Safari may unzip the "*.zmediapkg" automatically and the file will get corrupt. You may turn off this function or use a different browser like Mozilla Firefox. To change the default settings of Safari open the Safari settings dialog (press cmd and comma on your keyboard while Safari is your target window) and deselect the settings for "Open "safe" files after downloading" at the bottom of the settings dialog.

Once you have successfully installed the Mirage media package you will find all media types that were part of the package in the dropdown menu of the "on" selector in Mirage.

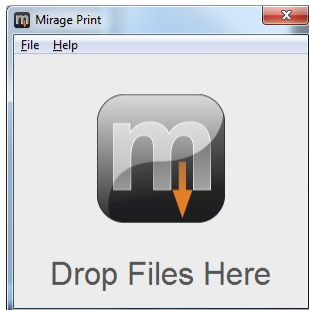
The list of supported media contains additional informations "MB" and "PB".

MB = supported with Matte Black ink only

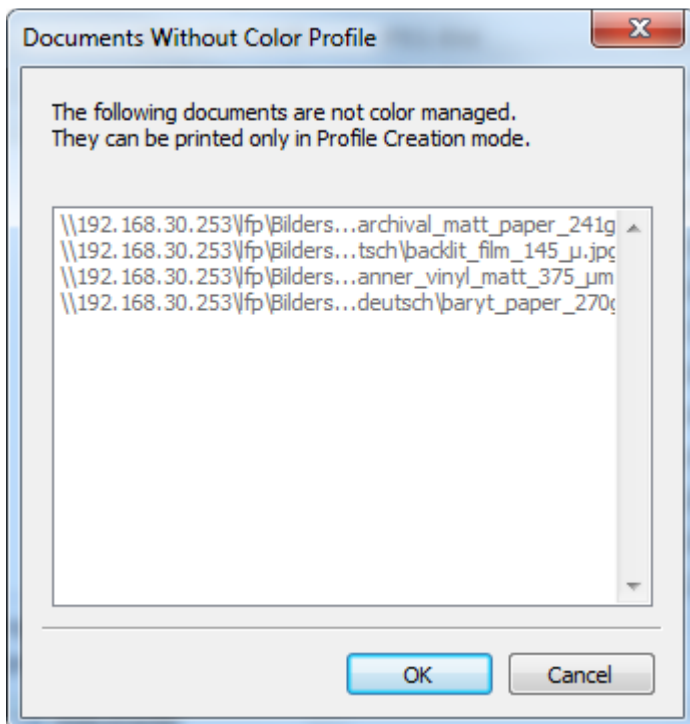
PB = supported with Photo Black ink only.

Print with Mirage 1.6.x – 2.x.x:

- 1.) Start Mirage Print.
- 2.) Drag and Drop one or more files onto the Mirage Print window.

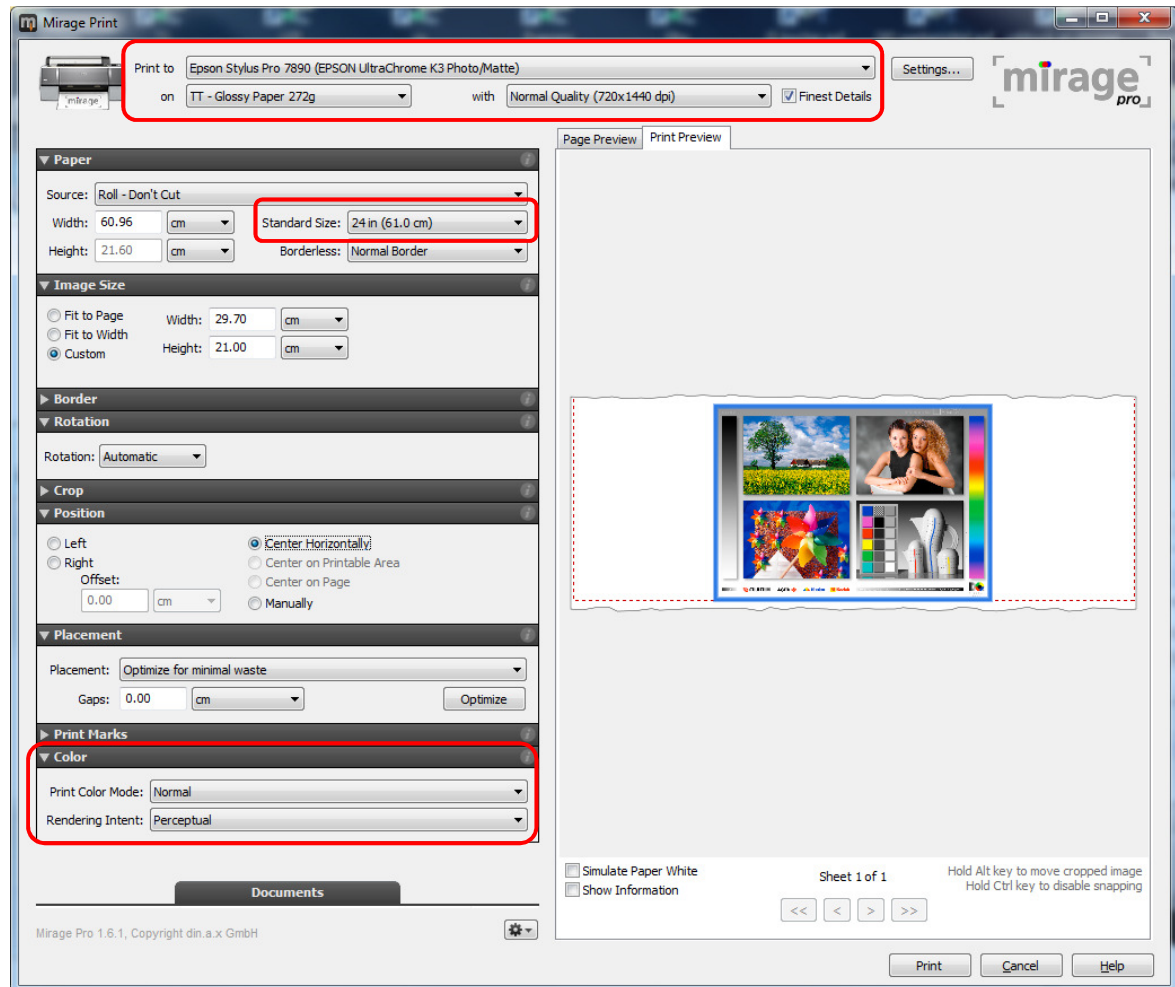


- 3.) If your pictures are without a color profile you get the following message:



- 4.) If you click OK you can print your pictures only without color management. We recommend to skip the dialog, open your pictures in Photoshop and assign the pictures an icc-profile.
e.g.: In Photoshop 7 please select picture > modus > assign profile
In Photoshop CS2-CS5 please select edit > assign profile
In the following dialog please choose the color working space: sRGB or Adobe RGB respectively a known scanner or camera color profile.

- 5.) After you assigned the pictures an icc-profile you will get the following Mirage window:



- 6.) Please mind the following settings:
- Choose your printer and the paper on which you want to print with the right print quality.
 - Set the correct paper size.
 - Adapt your image size.
 - At the color point use „**Print Color Mode: Normal**“ and the „**Rendering Intent: Perceptual**“ or „**Relative Colorimetric**“.

Now click on the „**Print**“ button to start printing.