

## Installation of TETENAL spectra jet ICC profiles in Adobe Photoshop 6, 7 and CS

This Instruction helps you to install the TETENAL spectra jet icc profiles for a perfect color reproduction on spectra jet inkjet media. The instruction was made for Adobe Photoshop 6, 7, CS under windows system but is compatible with Apple Macintosh.

1. Integration of the color profile into your operating system:

Windows: Mark the ICC profil once on the basis of any folder.  
Click with the right mouse button on the marked profile and select **install profile**.

Alternatively you can also activate your profile, by copying into following folder and afterwards choosing "file / install profile".

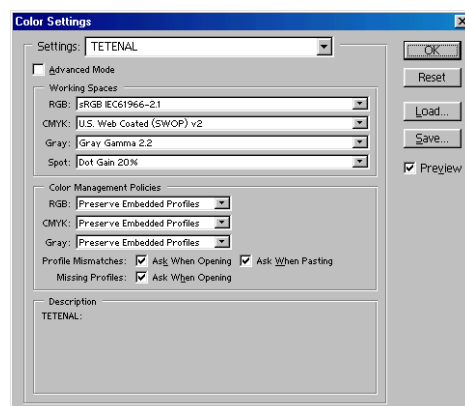
C:\windows\system\color (**Windows 98 und Me**)  
C:\WINNT\system32\color (**Windows NT**)  
C:\WINNT\system32\spool\drivers\color (**Windows 2000**)  
C:\windows\system32\spool\drivers\color (**Windows XP**)

Macintosh: Copy your profile to the "Color Sync" folder.  
Hard Drive\System Folder\Color Sync Profiles (**OS 8.x and 9.x**)  
Library\ColorSync\Profiles (**OS 10.x**)

2. Open Photoshop 6, 7 or CS and go to Edit / Color Settings.

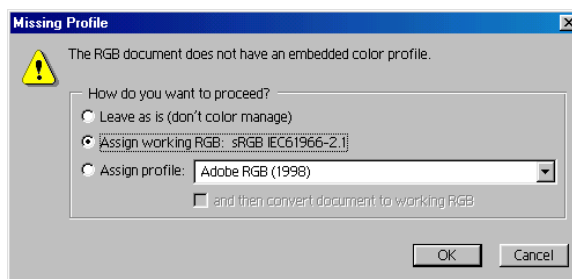
3. Choose your RGB working space.  
Recommendation: **sRGB**. Choose **Preserve Embedded Profiles** for the "RGB: Color Management Policies".  
Enable the three buttons for **Profile Mismatches** and **Missing Profiles**.  
We recommend to save the settings now.

Click OK.

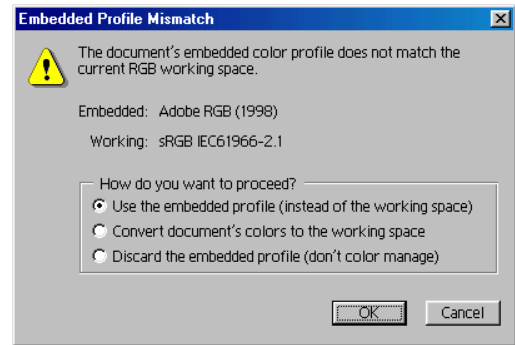


Restart Photoshop and load your picture (RGB-mode).

4. In case your document does not have an embedded color profile please select the further proceeding.  
Recommendation: **Assign working RGB (sRGB)**

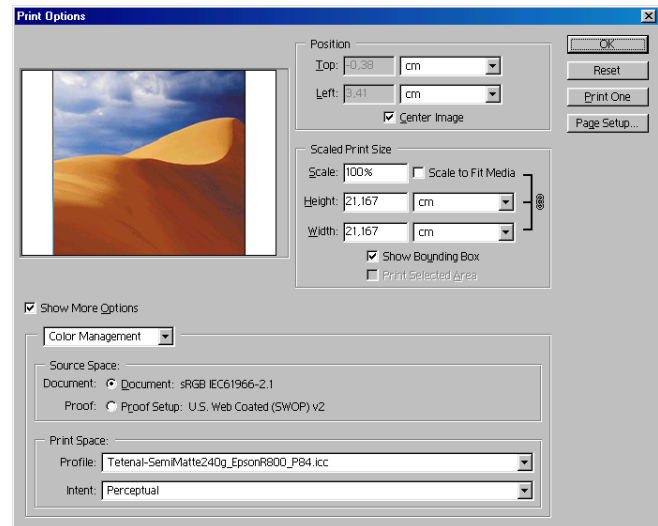


5. In case the documents embedded color profile (for example Adobe RGB) does not match the RGB working space (sRGB) choose select the further proceeding.  
 Recommendation: **Use the embedded profile.**  
 If the origin of the embedded color profile is unknown for you, choose **Discard the embedded profile.**



## 6. Printing with color profiles

- Photoshop 6:** Go to File / Print Options / Show More Options / Color Management.
- Photoshop 7 / CS:** Go to File / Print with Preview / Show More Options / Color Management.



Select within the area Print Space your ICC profile installed before.  
 Activate the setting "Perceptual". Activate "Black Point Compensation" (only Photoshop 7 / CS).

Click the **Setup** button and enter the printer driver adjustments provided with your ICC profil (PDF file: color correction).

You are now ready to begin printing!

### Important notice:

If you should using another printer driver setting than provided by TETENAL, the colors might not be matched correctly.  
 With most Epson printers please pay attention that you choose the setting **No Color Adjustment** in the menu "more settings".